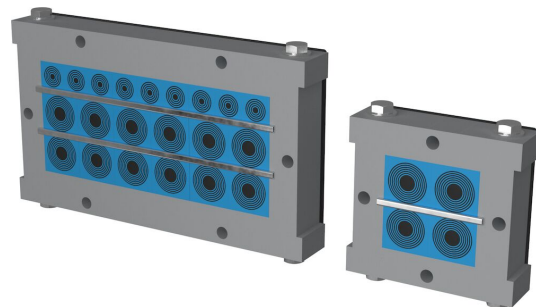




# Roxtec CRF doorvoeren

Voor kabels en flexibele kunststof buizen in rollend materieel.

De Roxtec CRF doorvoer is ontworpen en getest voor rollend materieel. Het lichtgewicht aluminium frame kan worden geopend, zodat tijdens de installatie of retrofitwerkzaamheden eenvoudig kabels of flexibele kunststof buizen kunnen worden toegevoegd of gewijzigd. Het frame is geschikt voor ofwel Roxtec CM en CM PPS afdichtingsmodulen met Multidiameter™ voor aanpasbaarheid aan kabelafmetingen, ofwel voor Roxtec CRF en CRF PPS modulen voor snelle seriereproductie met bekende kabeldiameters. De PPS versies van de twee typen modulen bieden brandbescherming voor flexibele kunststof buizen.



- Lichtgewicht
- Ruimtebesparend

## Producteigenschappen



Brandvertragend



IP/UL NEMA

## Installatiestructuur



Kasten en behuizingen

## Specificaties en certificaten

### Brand

- E/EI-classificatie volgens EN 45545 E30
- HL3 conform EN 45545-2 (R22, R23)

### Dichtheid

- IP 66 conform IEC 60529

### Supports

- Schok- en trillingscategorie 2 volgens IEC 61373

## Afmetingen frame

mm/kg

De onderstaande frame-uitvoeringen zijn een beperkte selectie. Ga naar [roxtec.com](https://www.roxtec.com) voor het volledige assortiment frames en configuraties.

Titel	Frame-openingen	Vrije doorvoerruimte	Buitenafmetingen WxHxD	Afmetingen opening w x h	Gewicht	Art. nr.
CRF 60x60 ANODIZ	1	60 x 60	108 x 112 x 35	70(+0/-0) x 60(+0/-0)	0.73	214613
CRF 80x160 ANODIZ	1	160 x 80	208 x 142 x 35	170(+0/-0) x 80(+0/-0)	1.27	214622
CRF 80x180 ANODIZ	1	180 x 80	228 x 142 x 35	190(+0/-0) x 80(+0/-0)	1.35	214623
CRF 80x200 ANODIZ	1	200 x 80	248 x 142 x 35	210(+0/-0) x 80(+0/-0)	1.46	214624
CRF 60x90 ANODIZ	1	90 x 60	138 x 112 x 35	100(+0/-0) x 60(+0/-0)	0.83	214614
CRF 60x120 ANODIZ	1	120 x 60	168 x 112 x 35	130(+0/-0) x 60(+0/-0)	0.89	214615
CRF 60x160 ANODIZ	1	160 x 60	208 x 122 x 35	170(+0/-0) x 60(+0/-0)	1.2	214616
CRF 60x180 ANODIZ	1	180 x 60	228 x 122 x 35	190(+0/-0) x 60(+0/-0)	1.27	214617
CRF 2x60x180 ANODIZ	2	180 x 60	428 x 122 x 35	190(+0/-0) x 60(+0/-0)	2.29	214618
CRF 80x80 ANODIZ	1	80 x 80	128 x 132 x 35	90(+0/-0) x 80(+0/-0)	0.86	214619
CRF 80x120 ANODIZ	1	120 x 80	168 x 132 x 35	130(+0/-0) x 80(+0/-0)	0.98	214620
CRF 2x80x120 ANODIZ	2	120 x 80	308 x 132 x 35	130(+0/-0) x 80(+0/-0)	1.61	214621

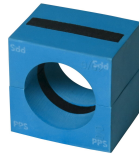


## Gegevens van afdichtcomponenten

### Afdichtcomponenten



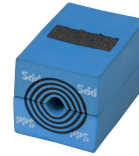
CRF modules



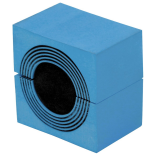
CRF PPS modules



Lubricant Blue



CM PPS module met Multidiameter™



CM module met Multidiameter™

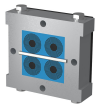


C fixeerplaat

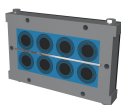
Ga naar [roxtec.com](https://www.roxtec.com) voor uitgebreide informatie.

## Vooraf geconfigureerde doorvoersets

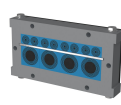
mm/kg



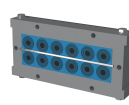
CRF 60x60/4 CM



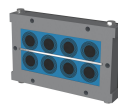
CRF 80x160/8 CM/PPS



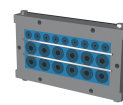
CRF 60x160/12 CM



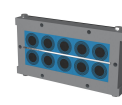
CRF 60x180/12 CM



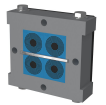
CRF 80x160/8 CM



CRF 80x180/21 CM



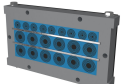
CRF 80x200/10 CM



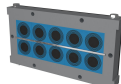
CRF 60x60/4 CM/PPS



CRF 60x120/9 CM/PPS



CRF 80x180/20 CM/PPS



CRF 80x200/10 CM/PPS

Titel	Configuratie	Buitenafmetingen WxHxD	Afmetingen opening w x h	Gewicht	Art. nr.
CRF 60x60/4 CM	4x (10.0-25.0)	108 x 112 x 35	70(+0/-0) x 60(+0/-0)	0.89	215951
CRF 80x160/8 CM/PPS	4x (21.5-34.5), 4x (21.5-33.5)	208 x 142 x 35	170(+0/-0) x 80(+0/-0)	1.88	215959
CRF 60x160/12 CM	8x (3.5-16.5), 4x (21.5-34.5)	208 x 122 x 35	170(+0/-0) x 60(+0/-0)	1.65	215952
CRF 60x180/12 CM	12x (10.0-25.0)	228 x 122 x 35	190(+0/-0) x 60(+0/-0)	1.78	215953
CRF 80x160/8 CM	8x (21.5-34.5)	208 x 142 x 35	170(+0/-0) x 80(+0/-0)	1.85	215954
CRF 80x180/21 CM	12x (10.0-25.0), 9x (4.0-14.5)	228 x 142 x 35	190(+0/-0) x 80(+0/-0)	1.99	215955
CRF 80x200/10 CM	10x (21.5-34.5)	248 x 142 x 35	210(+0/-0) x 80(+0/-0)	2.17	215956
CRF 60x60/4 CM/PPS	2x (10.0-25.0), 2x (10.0-24.0)	108 x 112 x 35	70(+0/-0) x 60(+0/-0)	0.9	215957
CRF 60x120/9 CM/PPS	3x (21.5-33.5), 6x (3.5-16.5)	168 x 112 x 35	130(+0/-0) x 60(+0/-0)	1.19	215958
CRF 80x180/20 CM/PPS	6x (10.0-25.0), 6x (10.0-24.0), 8x (3.5-16.5)	228 x 142 x 35	190(+0/-0) x 80(+0/-0)	1.99	215963
CRF 80x200/10 CM/PPS	5x (21.5-34.5), 5x (21.5-33.5)	248 x 142 x 35	210(+0/-0) x 80(+0/-0)	2.13	215964



The product information provided by Roxtec does not release the purchaser of the Roxtec system, or part thereof, from the obligation to independently determine the suitability of the products for the intended process, installation and/or use.

Roxtec gives no guarantee for the Roxtec system or any part thereof and assumes no liability for any loss or damage whatsoever, whether direct, indirect, consequential, loss of profit or otherwise, occurred or caused by the Roxtec systems or installations containing components not manufactured by an authorized manufacturer and/or occurred or caused by the use of the Roxtec system in a manner or for an application other than for which the Roxtec system was designed or intended.

Roxtec expressly excludes any implied warranties of merchantability and fitness for a particular purpose and all other express or implied representations and warranties provided by statute or common law. User determines suitability of the Roxtec system for intended use and assumes all risk and liability in connection therewith. In no event shall Roxtec be liable for indirect, consequential, punitive, special, exemplary or incidental damages or losses.

The Roxtec products are offered and sold in accordance with the conditions of the Roxtec General Terms of Sales. The latest version of the Roxtec General Terms of Sales can be downloaded from <https://www.roxtec.com/en/about-us/about-roxtec/general-terms-of-sales/>

We reserve the right to make changes to the product and technical information without further notice. Any errors in print or entry are no claims for indemnity. The content of this publication is the property of Roxtec International AB and is protected by copyright.

This document was generated on: 2026-04-29

